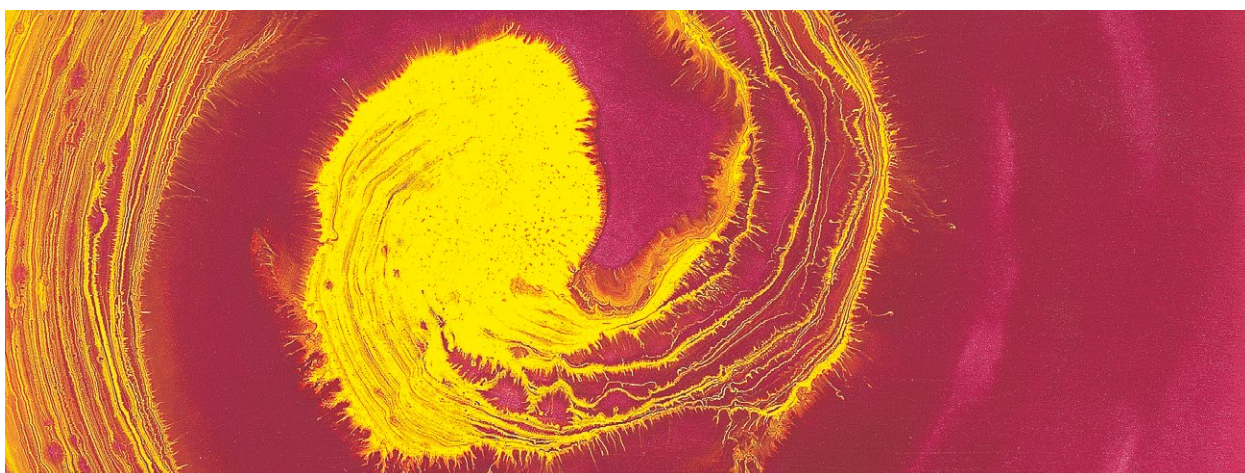


# Lascaux Resonance® Gouache

## Colour filled with life's impulses

Lascaux Resonance Gouache is a new development with specific active properties: as a result of vibratory and aromatic components, these colours support and encourage the soul's expressive potential and have a harmonic effect on both the individual and his or her environment. Lascaux Resonance Gouache can be used in all applications in which colour should be realized as a sensuous quality beyond its visual presence. Therefore, in all work processes that require creative colour employment as a central task.



Example of the use of Lascaux Resonance Gouache

### Comments on a New Development

Experience in recent years has revealed that an ever increasing number of people are searching for a vital connection to colour in one form or another. People from a multitude of personal and professional backgrounds are attending an expanding number of courses offered by ateliers, artists' workshops, art therapists, painting excursions, etc. It seems as if they are all looking for a deeper, more essential relationship with themselves and with their environment. We are in an age, which on one hand holds rationality and technical advancements above everything else, and on the other increases the need for emotional experiences and their means of expression. Single-mindedness and lack of creativity lead to an impoverishment of the soul and ultimately to illness.

Within this context Lascaux has been inspired to develop a colour concept whose aim is to support the development of the whole personality.

*This has been based on the idea that in relationship to colour, the creative channels of the individual are able to unfold.*

With Lascaux Resonance Gouache a paint has been created that supports and encourages the opening of creative space, achieved by the incorporation of the aromatic and vibratory components of what is known as bioinformation. This does not mean that the paint itself contains a specific dynamic by which the painter is forced into a particular direction. Just the opposite: only when a dialogue has been established with one's inner creative impulse can colours unfold to their utmost potential. Here, too, exists a search for the most ideal level of resonance. With every communication between two or more systems the principles of resonance and harmony take precedence. They create the invisible bridge over which information is exchanged and understanding is made fundamentally possible.

### Colours with a Revolutionary Character!

With Lascaux Resonance Gouache we are now going one revolutionary step further in that bioinformation has been added. As a result, the colours obtain a specific resonance capacity, which has a beneficial effect on the painter as well as on the observer. The interactive union created by man and colour is increased in value by means of bioinformation, penetrated by energetic clarity and elevated to an optimum level of resonance.

# Interaction with our environment

## The Principle of Resonance – An Important Law of Nature

Whoever experiences it once, wants to experience it again: that genuinely nurturing feeling of well-being and harmony. The principles of resonance and harmony play essential roles in every communication between two or more systems. They create invisible bridges over which information is exchanged, making communication possible.

## Matter and Information

Modern physics has recognized that matter is composed of tiny particles and, at the same time, electromagnetic waves. Consequently, all existence can be described as information saved in wave form, resonance patterns that expand within fields. This applies to matter, whether it be our bodies or a piece of metal, as well as to the immaterial, such as the brightness of a colour, the fragrance of a flower, or a fantastic idea. The dual nature of existence, matter and information, has scientifically gained more and more ground. The cognitive model, according to which matter is made up of increasingly smaller and smaller particles, has reached a point that no longer permits a further material reduction. Instead, invisible immaterial fields take over, controlling matter.

## Exchange with the Environment

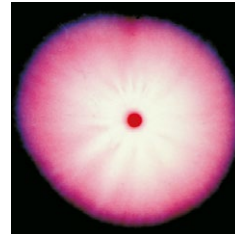
The human organism is surrounded and penetrated by a highly structured immaterial, bioelectric field over which it energetically interacts with its surroundings, exchanging in the process vital information – bioinformation. As a key fits a lock, so must bioinformation “fit” our bioenergetic field in order to be effective. Therefore, we not only need a lot of energy, but also precisely structured energy patterns that initiate a perfect resonance with our body. The more ordered and harmonious our own bioelectrical field and condition of our environment, the more we will experience support for inner orderliness and harmony.

## Decisive Life Impulses

Man has at his disposal a system of accumulating and processing information that is so complex it is scarcely imaginable. All around us the most manifold frequency spectrum is moving in a gigantic dance. An immense selection of existentially important resonance patterns is available to us. These are impulses of life, which ultimately determine the soundness of body-mind-soul. In the event that we fail to receive these vital resonating impulses in acceptable quantities or qualities, or when deficient information disturbs our immune system, we become ill. On the other hand, if we receive harmoniously resonating bioinformation, we remain or become healthy.

## What is Bioinformation?

- Bios originates from Greek and means life
- Information stands for message
- Bioinformation is accordingly living message



Energetic display of plant-based bioinformation

By means of biophysical techniques, highly structured frequency waves – resonance patterns, have been developed. They are obtained from plants, precious stones, metals, minerals, trace elements, as well as from precious gases, fermenting processes, etc. Transposed to suitable carrier materials such as tinctures or essences, and in this case added to a colour formula, they beneficially support the human energy field, specifically aimed at addressing individual potential.

## Organized Structures

Because water stores information, scientists in the last decades have been able to develop methods by which they can make that information visible. It was realized that the more lively and healthy the water, the clearer the organized crystalline structures.

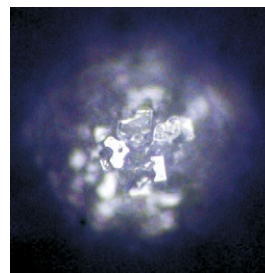


Fig. 1 Distilled water

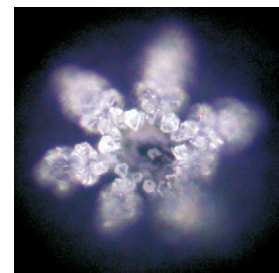


Fig. 2 Distilled water after Resonance energising

Distilled water (Fig. 1) is hardly able to develop a crystalline formation without the influence of greater vibrations.

A visual representation of a water crystal (Fig. 2) from Resonance Gouache makes the organized, crystalline structure visible and shows how Resonance brings out the energy life form.

# Range of Use

Lascaux Resonance Gouache can be used in all applications in which the fine material effect of the colour is important and the awareness of subtle energy levels should be increased, especially for:

- art therapy / healing arts
- Kindergarten, school
- colour design

The use of Lascaux Resonance Gouache in the work of painters, facilitators and teachers generates a clear increase in productivity and decreased symptoms of fatigue. Students are more aware and concentrated during instruction. "Raumfarbe Resonance" (Interior Paint Resonance) was specifically developed for interior applications. Its harmonising and energising effect on the room atmosphere makes this paint stand out among other interior paints.

## Testimonies:

"Due to my work with visually impaired individuals, these colours were ideal – 'normal' colours can hardly be recognized by many visually impaired."

*A. Wahner – painting atelier*

"Since using Lascaux Resonance colours many difficult situations have been more easily and more gracefully processed, the ability of the painter to resonate with his/her painting is increased thus allowing the therapeutic process to proceed less painfully overall."

*B. Egger – Psychotherapy and Art Therapy*

"The feeling of space is optimised through the use of Resonance paints: the colours are extremely pleasing to work with; the smell, the ease of application, the touch and the vibrancy are certainly deciding factors. Clients continually express their satisfaction with the clarifying effects of the paints and stress their sense of well-being in the rooms."

*V. Jud – Natural World of Living and Building*

"The joy and amazement continues to increase, not only with one finger, but with two or three always landing in the right paint tub. This requires concentration. It is always quiet in the classroom without having to say anything. Movements are always better, more coordinated... I've had good experiences with difficult children. After a period of time they paint more quietly and can work for half an hour instead of only five minutes. This in combination with motor skills, logopedics, play-therapy, etc."

*L. Guldin – Kindergarten teacher*

"In my work it is also important to awaken the senses. Resonance Colours have been created for this purpose... The vibrant colours have a pleasing effect on the eyes as on the entire body. For example, one can stand with one's back to a painting and absorb the energy or frequency by means of the unconscious. The effect is phenomenal in comparison to other paints. I also hear corresponding comments and associations from my painters: black is not only dark, but it also feels sooty. A mixture of black and brown paints like earth, that is, as if touching earth."

*E. Hofmann – Expressing Life through Painting*



Example of the use of "Lascaux Raumfarbe Resonance" (Interior Paint Resonance).

Impuls - Studio for movement and regeneration, Nänikon (Switzerland.)



Example of the use of Lascaux Resonance Gouache.



Example of the use of Lascaux Resonance Gouache. Painting studio Bettina Egger.



# Lascaux Resonance® Gouache

## Base

Lascaux Resonance Gouache colours are made of age-resistant, synthetic bonding agents, naturally based thickeners, Bioinformation, sage oil, and pure, lightfast pigments.

## Characteristics

- they dry velvet matte and remain water resistant
- can be partially dissolved after drying
- they can be used in any desired level of dilution with water
- the gel-like consistency facilitates drip and squirt-free painting
- due to high pigmentation they are prone to cracking if applied in thick layers.

## Use

- on all absorbent materials such as paper, cardboard, or canvas
- the colours are suitable as finger paints because of their smooth consistency
- all shades can easily be mixed with each other as well as other Lascaux Gouache colours
- Lascaux Resonance Gouache can also be mixed with Lascaux Acrylic Mediums for waterproof applications. For the pre-treatment of various supports see technical references, instruction card nr. 52304 and 52305.

## Form of Delivery

Available in jars of 250 ml and 500 ml, and as a set of 12 glass jars of 50 ml (hues 511, 513, 522, 524, 531, 541, 544, 552, 562, 563, 572, 581).

The Lascaux Resonance Gouache assortment comprises 28 hues that are physiologically and toxicologically harmless (nontoxic). Stir paint before use as a slight change in consistency during storage may occur.

USA – conforms to ASTM D-4236



## Disclaimer:

The information provided above is given to the best of our knowledge and is based on our current research and experience. It does not absolve the artist from the responsibility of first testing the suitability of our products for the substrate and specific use conditions he or she has in mind. This technical sheet will become invalid with any revised edition. The latest update is always found on our website.



Lascaux Colours & Restauro, Barbara Diethelm AG  
Zürichstrasse 42, CH-8306 Brüttisellen  
Tel. +41 44 807 41 41, Fax +41 44 807 41 40  
info@lascaux.ch, www.lascaux.ch



511  
Lemon yellow  
PY3 PW6



513  
Golden yellow  
PY83 PY74 PW6



514  
Orange  
PY83 PO73



522  
Vermilion  
PR9 PO73



523  
Bright red  
PR170 PO34 PW6



524  
Carmine red  
PR184 PR122



525  
Bordeaux red  
PR12



531  
Violet  
PV23 PR122



532  
Magenta  
PR122 PW6



533  
Rose  
PR170 PR146 PW6



541  
Ultramarine blue  
PB29



542  
Cobalt blue  
PB29 PW6



544  
Prussian blue  
PB15:3



545  
Light blue  
PB29 PB15:1 PW6



546  
Turquoise blue  
PB15:3 PG7 PW6



551  
Veronese green  
PG36 PW6



552  
Emerald green  
PG7 PW6



553  
Brilliant green  
PG7 PY3 PW6



554  
Green yellow  
PG7 PY1 PW6



561  
Beige  
PY42 PR101 PW6



562  
Yellow ochre  
PY42 PBr6



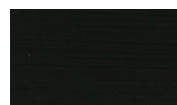
563  
Burnt Siena  
PR101



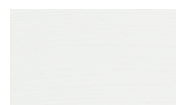
564  
Burnt umber  
PBr6 PBk7



571  
Grey  
PW6 PB29 PBk7



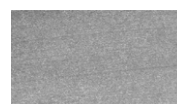
572  
Black  
PBk9



581  
White  
PW6



591  
Gold  
PR101/PW6/PW15/  
PW20



592  
Silver  
PW6/PW15/PW20

\*\*\* excellent lightfastness  
\*\* very good lightfastness  
■ opaque  
▨ semi-opaque

The brilliance of the Lascaux Resonance Gouache does not reproduce well in this printing method.